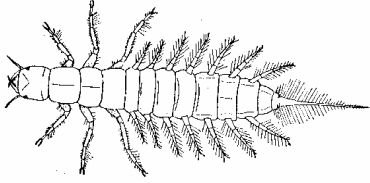


AQUATIC MACROINVERTEBRATE

Identification Guide

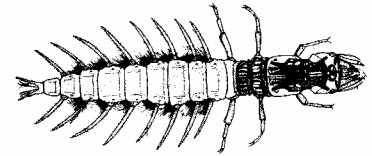
LOW POLLUTION TOLERANCE (PTI = 3)



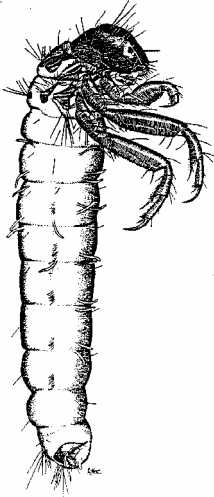
Fishfly Larva (O. Megaloptera)



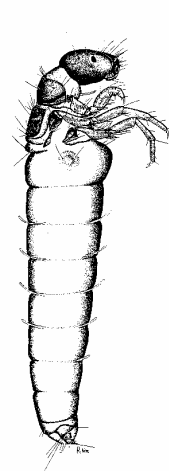
Snipefly Larva (O. Diptera)



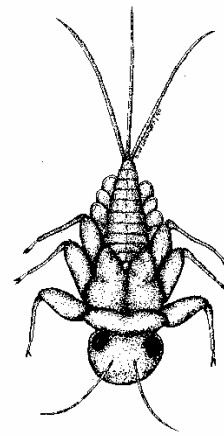
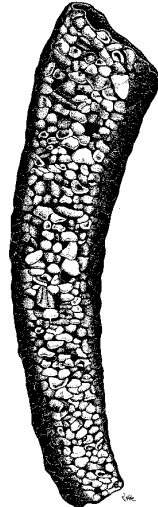
Dobsonfly Larva (O. Megaloptera)



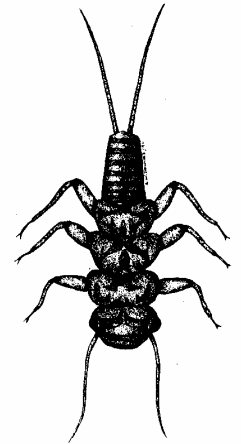
Caddisfly Larva (O. Trichoptera)
plant-matter case



Caddisfly Larva
gravel case

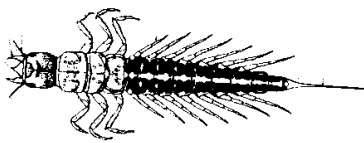


Mayfly Nymph
(O. Ephemeroptera)

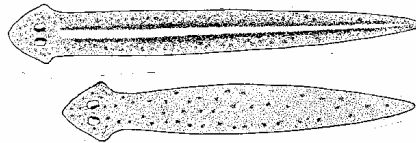


Stonefly Nymph
(O. Plecoptera)

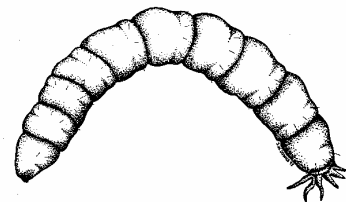
MEDIUM POLLUTION TOLERANCE (PTI = 2)



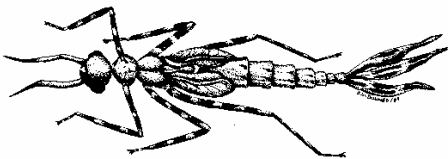
Alderfly Larva (F. Sialidae)



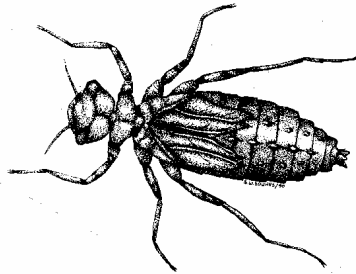
Flatworms (C. Turbellaria)



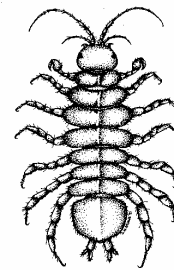
Cranefly Larva (F. Tipulidae)



Damselfly Nymph (O. Odonatia)



Dragonfly Nymph (O. Odonatia)

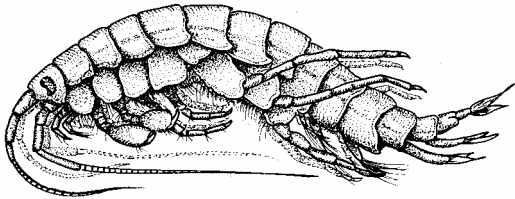


Aquatic Sowbug (O. Isopoda)

AQUATIC MACROINVERTEBRATE

Identification Guide

MEDIUM POLLUTION TOLERANCE (PTI = 2)



Freshwater Scud (O. Amphipoda)



Aquatic Snails (C. Gastropoda)

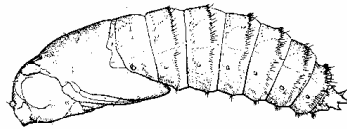


Water Mites (C. Arachnida)

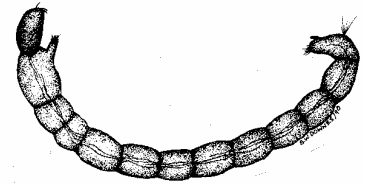
HIGH POLLUTION TOLERANCE (PTI = 1)



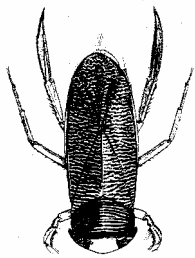
Blackfly Larva (F. Simuliidae)



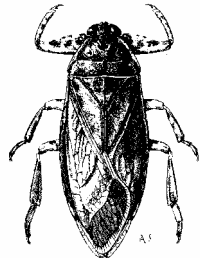
Horse/Deerfly Larva (F. Tabanidae)



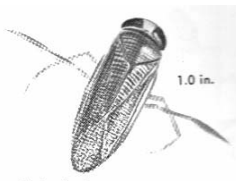
Midge Larva (F. Chironomidae)



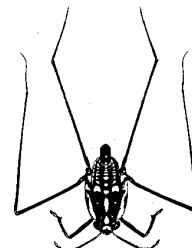
Backswimmer
(F. Corixidae)



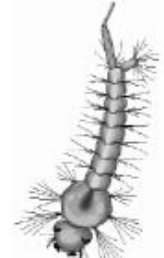
Giant Water Bug
(G. Lethocerus)



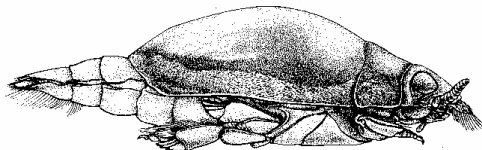
Water Boatman
(F. Corixa)



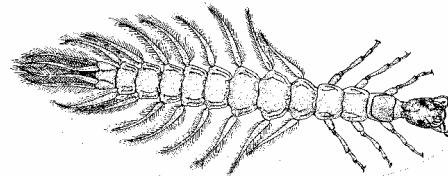
Waterstrider
(F. Gerridae)



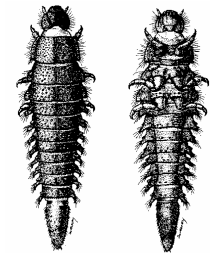
Mosquito Larvae
(O. Diptera)



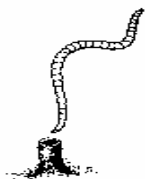
Whirligig Beetle (F. Gyrinidae)



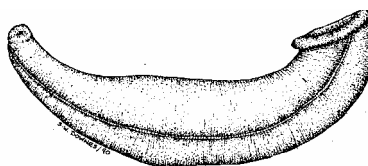
Whirligig Beetle Larva (F. Gyrinidae)



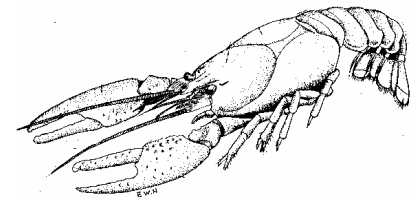
Riffle Beetle (F. Elmidae)



Aquatic Worms (Oligochaeta)



Leech (C. Hirudinea)



Crayfish (O. Decapoda)
